



FULTON
NEIGHBORHOOD
.....
FULTONCHARLESTON.COM

sales@fultoncharleston.com
1-800-593-9683
2415-T Old Georgetown Road
Mt Pleasant, SC 29466



Lot 19
3701 sqft
5 bedrooms, 4.5 baths

Master down, Carriage house with
separate entrance, Home office



MEYER POTTS
PROPERTIES
CHARLESTON, SOUTH CAROLINA

KW
KELLERWILLIAMS
REALTY

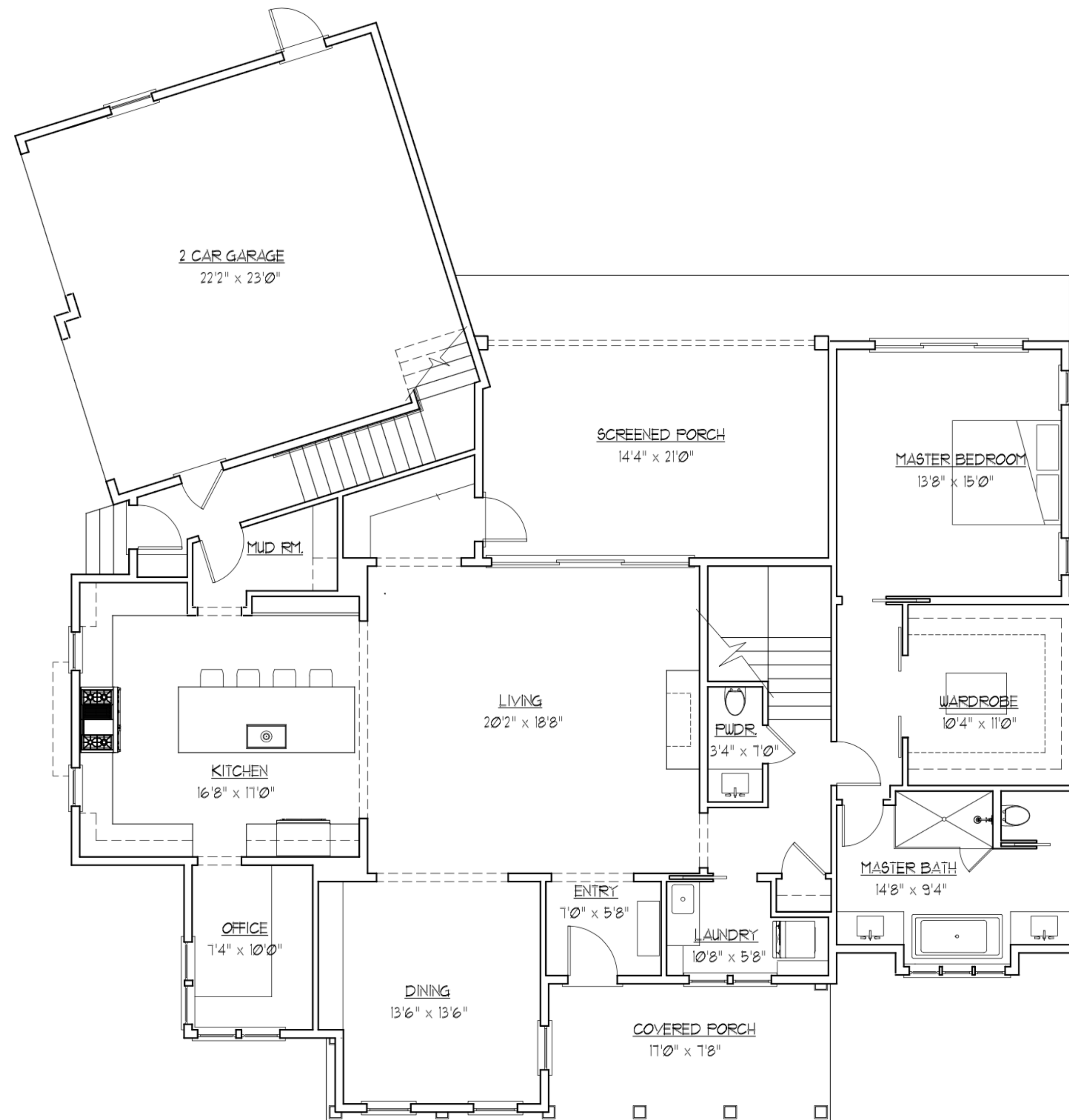


Development as depicted in the brochure is subject to change. All copy and artwork contained by this brochure are sole property of Old Georgetown LLC. Photos are representational in nature and should not be relied upon to confirm applicable features. All renderings, landscaping and floor plans are approximate, not to scale, may vary from final construction plan, are representational in nature and are for illustrative purposes only. All depictions of appliances, plumbing fixtures, equipment, counters, soffits, floor coverings, furniture, and other materials of detail are conceptual. Furniture is not included. We make no guarantee, warranty, or representation as to the accuracy and completeness of the site plan, floor plan, landscaping plan or any other plans. All plans and pricing are subject to change. 06/01/2017



FULTON
NEIGHBORHOOD
.....
FULTONCHARLESTON.COM

sales@fultoncharleston.com
1-800-593-9683
2415-T Old Georgetown Road
Mt Pleasant, SC 29466



FULTON LOT 19
FIRST FLOOR PLAN 3.8.21
SCALE: 1/4" = 1'-0" 1999 SF. MAIN HOUSE
545 SF. GARAGE

Lot 19

First floor



MEYER POTTS
PROPERTIES
CHARLESTON, SOUTH CAROLINA

KW
KELLERWILLIAMS
REALTY

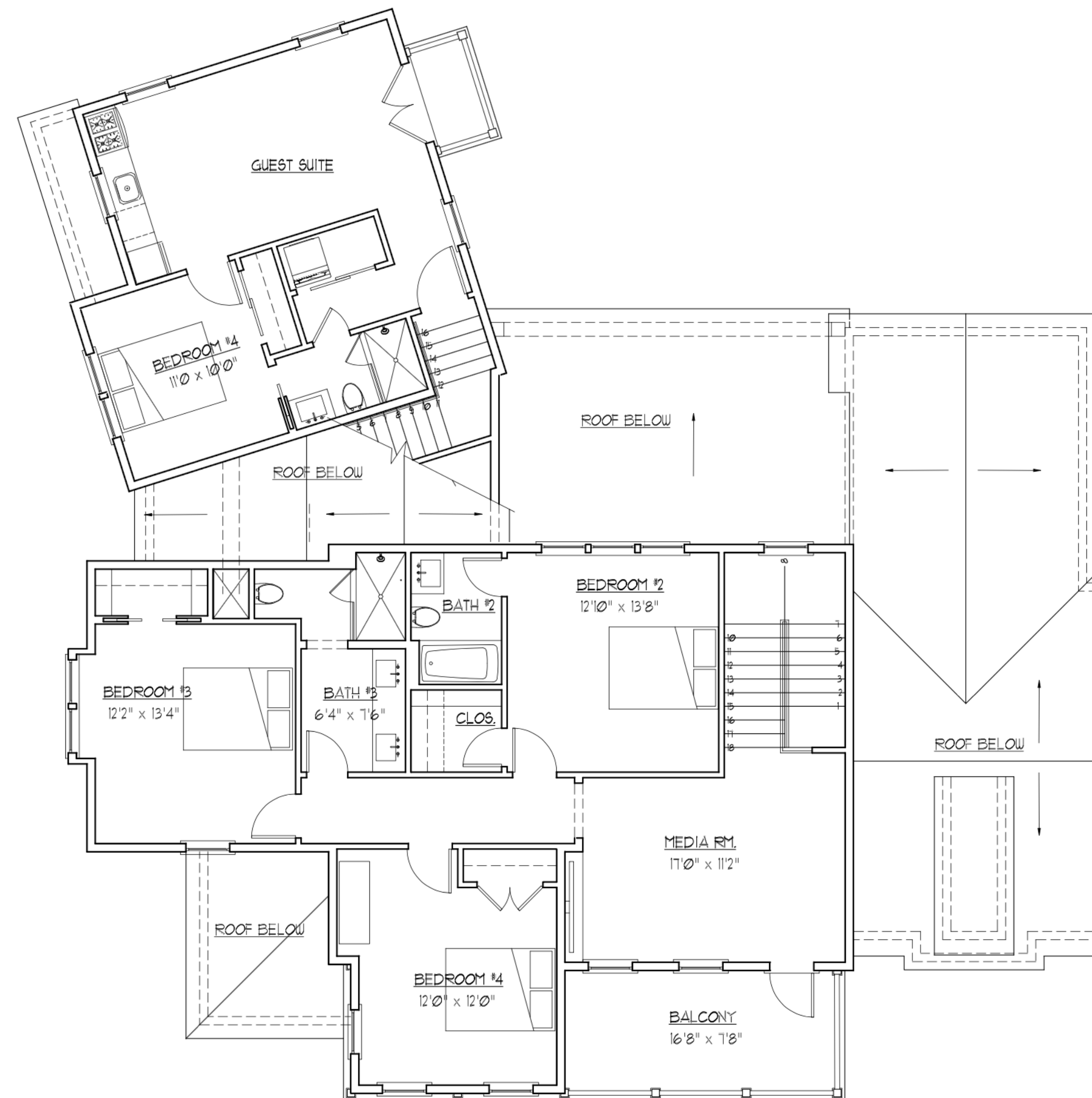


Development as depicted in the brochure is subject to change. All copy and artwork contained by this brochure are sole property of Old Georgetown LLC. Photos are representational in nature and should not be relied upon to confirm applicable features. All renderings, landscaping and floor plans are approximate, not to scale, may vary from final construction plan, are representational in nature and are for illustrative purposes only. All depictions of appliances, plumbing fixtures, equipment, counters, soffits, floor coverings, furniture, and other materials of detail are conceptual. Furniture is not included. We make no guarantee, warranty, or representation as to the accuracy and completeness of the site plan, floor plan, landscaping plan or any other plans. All plans and pricing are subject to change. 06/01/2017



FULTON
NEIGHBORHOOD
.....
FULTONCHARLESTON.COM

sales@fultoncharleston.com
1-800-593-9683
2415-T Old Georgetown Road
Mt Pleasant, SC 29466



FULTON LOT 19
SECOND FLOOR PLAN 3,821
SCALE: 1/4" = 1'-0"
1081 SF MAIN HOUSE
515 SF GUEST SUITE

Lot 19

Second floor



MEYER POTTS
PROPERTIES
CHARLESTON, SOUTH CAROLINA

KW
KELLERWILLIAMS
REALTY



Development as depicted in the brochure is subject to change. All copy and artwork contained by this brochure are sole property of Old Georgetown LLC. Photos are representational in nature and should not be relied upon to confirm applicable features. All renderings, landscaping and floor plans are approximate, not to scale, may vary from final construction plan, are representational in nature and are for illustrative purposes only. All depictions of appliances, plumbing fixtures, equipment, counters, soffits, floor coverings, furniture, and other materials of detail are conceptual. Furniture is not included. We make no guarantee, warranty, or representation as to the accuracy and completeness of the site plan, floor plan, landscaping plan or any other plans. All plans and pricing are subject to change. 06/01/2017



FULTON
NEIGHBORHOOD
.....
FULTONCHARLESTON.COM

sales@fultoncharleston.com
1-800-593-9683
2415-T Old Georgetown Road
Mt Pleasant, SC 29466

Features

Architecture and Design:

Designed by a team of professionals:

- Urban Planner
- Architect
- Interior Designer
- Kitchen Designer
- Landscape Architect
- In-House Design Coordinator
- Builder

Structural:

- Soil testing performed
- Increased diameter of foundation rebars
- Prime Grade 2" x 6" studs
- Superior performing roof and floor truss system

Energy and Low Maintenance Features:

- Raised slab foundation
- TYPAR wrap paper and flashing tape system on exterior walls
- PVC windows with Low-E glass - double hung or casement
- 12 feet wide and 8 feet tall glass PVC sliding door with aluminum rack - where applicable
- Mahogany wood entry door
- Fiberglass exterior doors - where applicable
- Insulated steel garage doors, 130 mph wind rated
- Fiber cement siding - James Hardie Plank
- Exterior trim material : #1 kiln dried pressure treated wood and/or fiber cement

- Metal roof with 0.60 mil underlayment
- Porch flooring is concrete tabby with brick/paver borders
- 14 SEER high-efficiency HVAC equipment
- Airtightness evaluated by blower door test
- Icynene open cell spray foam insulation and upgraded wall insulation
- Natural gas
- Tankless hot water heater with recirculating pump

Interior:

- All interior items designed and selected by professional interior designer / team
- 10' ceilings on first floor, 9' ceilings on second floor and vaulted where applicable
- Hardwood floor throughout with high quality water based finish
- Custom designed interior trim details like crown moldings, casings, wall paneling, fireplace paneling and mantle
- High-end custom cabinetry with solid wood construction, dove tail drawers with soft close undermount drawer glides throughout
- Closets custom-designed for each house by Closets By Timm
- 8' MDF solid core doors on both floors
- Zero entry, curbless master shower
- Tile in master and secondary bathrooms and laundry room

- Ventless gas fireplace with custom designed surround and mantel and remote controlled gas logs
- Countertops to be quartz, marble or natural stone
- Plumbing fixtures to include wall-mounted toilets, free-standing bathtub, stainless steel kitchen farm sink or undermount, air switch for disposal, master showers with two shower heads, etc.
- Electrical fixtures include 4" recessed cans, under cabinet lighting in kitchen, Decora switches and generous allowance for decorative lights
- High-end appliance packages, such as Thermador and Bosch, specifically designed for each house. Selections include fully integrated, built-in or stainless steel refrigerators, gas cooktops, dual fuel cooking, convection and speed ovens, dishwashers with custom paneling, and wine coolers. Contact sales agent for detailed info on each house.
- Designer selected door and cabinet hardware
- Interior designer time allocated for selections for buyer to personalize the house

Landscaping/Hardscaping:

- Outside living spaces designed by a landscape architect
- Private, fenced-in yards
- Accents include stepping stones, brick borders, and tabby finishes
- Large plantings create immediate lush boundaries



Development as depicted in the brochure is subject to change. All copy and artwork contained by this brochure are sole property of Old Georgetown LLC. Photos are representational in nature and should not be relied upon to confirm applicable features. All renderings, landscaping and floor plans are approximate, not to scale, may vary from final construction plan, are representational in nature and are for illustrative purposes only. All depictions of appliances, plumbing fixtures, equipment, counters, soffits, floor coverings, furniture, and other materials of detail are conceptual. Furniture is not included. We make no guarantee, warranty, or representation as to the accuracy and completeness of the site plan, floor plan, landscaping plan or any other plans. All plans and pricing are subject to change. 06/01/2017



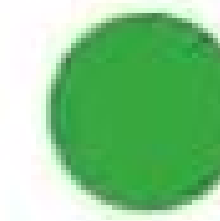
FULTON
NEIGHBORHOOD
.....
FULTONCHARLESTON.COM

sales@fultoncharleston.com
1-800-593-9683
2415-T Old Georgetown Road
Mt Pleasant, SC 29466

Fulton Site Map

Sold/Occupied

Available



Development as depicted in the brochure is subject to change. All copy and artwork contained by this brochure are sole property of Old Georgetown LLC. Photos are representational in nature and should not be relied upon to confirm applicable features. All renderings, landscaping and floor plans are approximate, not to scale, may vary from final construction plan, are representational in nature and are for illustrative purposes only. All depictions of appliances, plumbing fixtures, equipment, counters, soffits, floor coverings, furniture, and other materials of detail are conceptual. Furniture is not included. We make no guarantee, warranty, or representation as to the accuracy and completeness of the site plan, floor plan, landscaping plan or any other plans. All plans and pricing are subject to change. 06/01/2017